



BELO SUN RELEASES RESULTS FOR 85 ADDITIONAL DRILL HOLES AT ITS VOLTA GRANDE PROJECT

TORONTO, November 5th, 2012 – **Belo Sun Mining Corp.** (TSX:BSX) reports assays for 85 additional drill holes (corresponding to 27,261 meters) at its Volta Grande Project as part of its mineral resources expansion and upgrade drilling program.

The results being released today are being incorporated into the company's database and will be used in the new mineral resource estimate update expected to be completed later this year. This mineral resource estimate update represents a very important milestone for the company as it will be the largest in terms of number of new holes (263) and meters (73,675) in the history of the Volta Grande Project (See press releases dated June 27th, 2012 and Sept 4th, 2012).

Included in this release are the assay results from 59 additional drill holes from the Grota Seca deposit, 24 from the Ouro Verde deposit and 2 from the South block area. The complete results and selected cross sections are presented below. Highlights from the holes contained in this release include:

- ✓ Hole VVGD-542 (Grota Seca Cross Section 862.5W) intersected **39.00 meters grading 5.25 g/t Au** (from 71.00 meters) including **12.00 meters grading 10.09 g/t Au** (from 75.00 meters)
- ✓ Significant down dip intercepts at the Ouro Verde deposit such as in hole VVGD-444 at section 725 NW with **12.10 meters grading 4.90 g/t Au** (from 401.85 meters) and **16.73 meters grading 2.00 g/t Au** (from 483.50 meters).
- ✓ Hole VVGD-566 which is located in the Ouro Verde / Grota Seca "Junction" (Ouro Verde Cross Section 350J) intersected multiple mineralized zones suggesting possible continuity of the mineralization between the two deposits..
- ✓ At the South Block, Grande Deposit the highlight is hole VVGD-465 with **4.65 meters grading 6.13 g/t Au**.

Helio Diniz, the Vice President of Exploration for Belo Sun, stated, "We are very pleased to see the results confirming our expectations about the quality of the Volta Grande gold deposits. In addition, the modelling of the deposits are meeting our expectations to deliver the new resource estimate before the end of the year, which will be incorporated into a new mining plan that will be the basis of the pre-feasibility study to be released in Q1 2013."

At present Volta Grande has 2.85 million ounces in the measured and indicated category grading 1.69 g/t and 2.3 million ounces grading 1.81 g/t in the inferred category (see press releases dated April 25th, 2012 and June 11th, 2012). The focus of this campaign has been to upgrade inferred resources into the measured and indicated category and to expand the overall size of the resource estimate.

TABLE 1 – DIAMOND DRILLING ASSAY RESULTS

The widths reported below represent the core width of the intercepts; true widths are expected to range between 85-95% of the core width.

NR 11/07/2012									
Grota Seca Deposit					Grota Seca Deposit				
Hole #	From (m)	To (m)	Width (m)	Au g/t	Hole #	From (m)	To (m)	Width (m)	Au g/t
VVGD-414	111.00	116.00	5.00	0.52	VVGD-472	0.00	6.80	6.80	1.28
and	136.00	142.00	6.00	0.59	and	16.95	28.15	11.20	3.36
and	171.00	174.00	3.00	0.70	and	72.25	79.00	6.75	0.64
and	288.60	293.00	4.40	0.78	and	92.64	100.20	7.56	0.93
VVGD-420	39.00	44.05	5.05	0.86	and	111.00	116.15	5.15	2.71
and	118.00	123.80	5.80	3.29	and	190.25	199.00	8.75	0.73
and	182.00	187.40	5.40	1.38	and	286.00	296.45	10.45	0.81
and	321.00	326.00	5.00	2.59	and	319.55	337.60	18.05	1.30
VVGD-440	0.00	3.70	3.70	1.04	and	356.00	359.20	3.20	4.64
and	51.00	56.20	5.20	2.50	and	404.15	411.00	6.85	2.00
and	67.00	79.70	12.70	0.85	VVGD-476	0.00	5.05	5.05	1.17
and	202.00	205.40	3.40	1.36	and	11.70	15.20	3.50	0.59
and	245.00	250.00	5.00	0.96	VVGD-477	NSR			
and	322.00	325.00	3.00	5.17	VVGD-478	15.30	19.00	3.70	1.38
and	330.50	334.27	3.77	2.22	and	85.00	89.00	4.00	1.51
and	414.46	419.80	5.34	0.76	and	121.00	126.50	5.50	0.63
and	509.00	517.00	8.00	3.04	and	141.20	145.00	3.80	0.74
VVGD-456	0.00	5.00	5.00	1.03	and	208.75	214.00	5.25	0.54
and	80.65	85.70	5.05	1.13	and	329.00	337.00	8.00	0.85
and	121.00	134.00	13.00	0.98	VVGD-479	38.00	47.45	9.45	0.55
and	153.00	155.80	2.80	3.89	and	51.12	71.00	19.88	0.76
and	177.04	187.00	9.96	1.27	and	75.00	84.00	9.00	1.27
and	332.00	340.00	8.00	7.35	VVGD-480	0.00	6.30	6.30	0.71
VVGD-457	13.00	17.00	4.00	0.54	and	176.94	182.35	5.41	7.21
and	146.60	153.75	7.15	6.69	and	213.00	222.00	9.00	0.93
VVGD-464	44.00	54.75	10.75	1.68	and	248.72	253.00	4.28	7.87
and	221.00	226.00	5.00	1.33	VVGD-481	0.00	3.25	3.25	1.21
and	337.00	342.80	5.80	0.72	and	241.00	248.80	7.80	1.44
and	354.00	360.00	6.00	1.50	and	254.00	260.00	6.00	0.56
VVGD-468	191.55	200.83	9.28	0.74	and	396.40	408.00	11.60	0.94
and	248.31	252.00	3.69	0.51	and	417.00	432.60	15.60	2.63
and	266.00	276.70	10.70	0.57	VVGD-483	74.90	83.00	8.10	0.63
and	339.00	345.00	6.00	0.70	and	213.25	215.45	2.20	3.04
and	351.20	354.20	3.00	0.99	VVGD-485	159.09	165.71	6.62	0.71
VVGD-469	0.00	3.51	3.51	0.80	and	182.65	188.20	5.55	4.73
and	7.00	11.35	4.35	0.58	and	195.55	198.80	3.25	0.55
and	37.00	55.30	18.30	0.57	and	203.80	212.00	8.20	0.63
and	171.33	175.00	3.67	0.82	and	226.90	230.80	3.90	0.84
and	190.00	195.00	5.00	0.67	VVGD-489	NSR			
and	237.70	258.00	20.30	1.11	VVGD-491	0.00	31.10	31.10	0.83
and	340.00	357.00	17.00	2.21	and	71.00	77.10	6.10	5.78
VVGD-471	0.00	4.00	4.00	0.73	and	113.85	117.40	3.55	2.03
and	229.00	233.75	4.75	0.74	and	174.00	177.70	3.70	0.63
					and	267.00	276.10	9.10	1.02
					and	291.50	303.60	12.10	5.75
					and	309.00	319.00	10.00	1.75



Grota Seca Deposit				
Hole #	From (m)	To (m)	Width (m)	Au g/t
VVGD-494	168.00	173.00	5.00	0.97
and	239.35	250.00	10.65	0.74
and	259.90	267.75	7.85	0.92
VVGD-495	85.00	91.50	6.50	2.14
and	105.00	114.00	9.00	1.29
and	145.00	153.00	8.00	1.15
and	165.00	169.15	4.15	0.50
and	208.00	213.25	5.25	5.16
and	249.00	261.00	12.00	1.70
and	274.00	278.00	4.00	2.72
and	282.50	304.70	22.20	0.92
and	313.25	317.00	3.75	0.63
and	477.00	482.85	5.85	0.51
and	489.20	492.20	3.00	8.04
VVGD-499	232.00	240.80	8.80	1.85
and	262.00	276.00	14.00	1.18
VVGD-501	125.35	129.00	3.65	0.50
and	141.65	144.75	3.10	0.58
and	159.00	165.30	6.30	0.91
and	177.70	182.06	4.36	2.02
and	186.00	192.00	6.00	0.74
and	200.00	203.00	3.00	0.73
and	232.00	235.30	3.30	0.67
VVGD-502	123.20	126.00	2.80	1.40
and	172.00	183.00	11.00	0.59
and	189.00	193.76	4.76	0.61
and	196.00	200.00	4.00	0.54
and	207.00	210.00	3.00	0.99
and	218.00	223.00	5.00	1.49
and	243.00	251.00	8.00	4.03
and	268.07	273.00	4.93	1.02
and	287.66	295.00	7.34	1.00
and	429.00	436.00	7.00	2.70
and	456.00	460.00	4.00	2.84
VVGD-503	0.00	3.00	3.00	0.52
and	66.90	71.00	4.10	0.56
and	95.62	99.00	3.38	0.62
and	228.60	232.90	4.30	6.06
and	246.00	249.00	3.00	3.79
and	353.03	357.50	4.47	0.86
VVGD-505	47.00	50.25	3.25	1.55
and	76.80	80.00	3.20	1.31
VVGD-507	47.43	65.15	17.72	3.95
and	140.00	144.00	4.00	0.59
VVGD-508	52.00	60.00	8.00	1.29
and	121.00	140.00	19.00	0.60
and	221.00	228.00	7.00	0.69
VVGD-509	113.40	116.72	3.32	0.80
and	130.00	133.00	3.00	0.81

Grota Seca Deposit				
Hole #	From (m)	To (m)	Width (m)	Au g/t
VVGD-510	0.00	3.70	3.70	2.16
and	50.80	56.40	5.60	0.61
and	112.00	116.00	4.00	1.03
and	160.89	166.40	5.51	2.98
and	170.12	173.85	3.73	1.34
and	189.00	192.40	3.40	0.89
and	207.00	211.84	4.84	6.87
and	218.00	227.80	9.80	4.07
VVGD-511	0.00	8.00	8.00	0.70
and	126.10	130.00	3.90	0.89
and	144.05	153.00	8.95	0.93
and	158.40	162.00	3.60	0.59
and	165.30	169.20	3.90	0.71
and	190.50	194.90	4.40	0.54
VVGD-512	67.00	69.00	2.00	1.85
and	143.20	146.95	3.75	1.97
and	191.00	199.20	8.20	0.99
VVGD-513	0.00	6.00	6.00	0.64
and	18.00	32.00	14.00	0.52
and	183.00	187.00	4.00	4.09
and	218.00	224.00	6.00	1.55
VVGD-514	0.00	5.00	5.00	12.61
and	70.50	72.80	2.30	34.50
and	117.20	120.30	3.10	0.81
and	126.55	133.00	6.45	0.51
and	168.85	173.50	4.65	1.68
and	182.00	197.88	15.88	0.81
and	212.75	220.50	7.75	2.53
and	243.50	248.05	4.55	1.47
and	325.00	329.50	4.50	0.68
and	342.96	377.73	34.77	1.63
Including	362.15	373.50	11.35	2.33
and	461.74	465.00	3.26	0.80
and	490.60	501.24	10.64	0.91
and	510.20	513.59	3.39	0.76
VVGD-517	126.80	139.39	12.59	2.44
and	145.85	149.20	3.35	1.89
VVGD-518	0.00	3.80	3.80	0.98
and	16.00	22.70	6.70	1.31
and	63.55	77.00	13.45	1.33
and	99.00	104.00	5.00	0.57
and	111.00	116.00	5.00	1.36
and	130.00	139.00	9.00	1.00
VVGD-520	0.00	4.80	4.80	0.62
and	111.00	114.30	3.30	1.56
and	159.00	163.00	4.00	0.54
VVGD-523	0.00	4.00	4.00	0.91
and	14.30	18.50	4.20	1.11
and	42.00	46.00	4.00	2.43
and	77.35	83.80	6.45	0.61
and	91.75	100.75	9.00	0.82
and	104.50	108.65	4.15	1.33



Grota Seca Deposit				
Hole #	From (m)	To (m)	Width (m)	Au g/t
VVGD-526	0.00	6.00	6.00	0.64
and	11.00	15.00	4.00	0.79
and	57.00	61.00	4.00	0.72
and	65.80	68.00	2.20	8.29
VVGD-530	142.00	150.00	8.00	0.67
and	156.00	171.00	15.00	0.92
and	199.00	204.00	5.00	0.95
and	221.00	224.60	3.60	3.49
and	303.00	306.00	3.00	2.25
and	373.00	376.40	3.40	1.29
and	385.00	392.30	7.30	1.55
and	402.40	407.00	4.60	0.82
and	414.00	418.00	4.00	2.65
and	423.00	431.00	8.00	0.52
and	440.00	446.00	6.00	0.62
and	462.00	473.00	11.00	1.09
and	538.00	544.00	6.00	7.74
and	572.50	582.60	10.10	0.67
and	620.00	624.00	4.00	0.80
VVGD-531	0.00	4.00	4.00	1.69
and	46.80	53.45	6.65	0.75
and	65.00	69.45	4.45	0.91
VVGD-533	3.51	28.00	24.49	2.83
Including	11.00	28.00	17.00	3.91
VVGD-534	0.00	6.10	6.10	1.83
and	54.00	60.00	6.00	0.72
and	68.00	71.40	3.40	1.41
VVGD-535	0.00	3.00	3.00	0.54
and	80.72	96.00	15.28	3.10
VVGD-538	17.35	24.87	7.52	0.85
and	95.00	104.20	9.20	0.82
and	147.80	161.00	13.20	1.02
and	177.00	182.20	5.20	2.43
and	204.00	207.00	3.00	0.81
and	258.00	262.00	4.00	1.87
and	267.85	271.00	3.15	0.86
and	277.00	280.00	3.00	0.52
and	299.00	303.20	4.20	0.53
and	359.41	363.80	4.39	1.12
VVGD-539	49.00	57.00	8.00	0.59
and	67.00	78.00	11.00	0.75
and	81.70	101.37	19.67	1.19
Including	83.00	91.00	8.00	2.04
and	105.00	110.07	5.07	0.57
and	119.00	122.00	3.00	0.62
and	152.00	154.20	2.20	16.32

Grota Seca Deposit				
Hole #	From (m)	To (m)	Width (m)	Au g/t
VVGD-542	7.00	17.00	10.00	0.55
and	31.00	35.00	4.00	1.22
and	39.30	63.00	23.70	0.85
and	71.00	110.00	39.00	5.24
Including	75.00	87.00	12.00	10.09
VVGD-543	8.00	14.40	6.40	1.23
and	118.60	125.05	6.45	3.21
and	137.69	144.45	6.76	0.67
VVGD-545	0.00	5.00	5.00	0.67
and	51.00	67.00	16.00	3.11
and	106.62	111.00	4.38	0.60
and	175.00	194.00	19.00	2.02
and	198.87	206.00	7.13	0.76
VVGD-550	NSR			
VVGD-551	0.00	8.40	8.40	0.57
VVGD-553	0.00	4.57	4.57	1.21
and	102.00	107.20	5.20	0.55
and	132.00	136.30	4.30	0.78
and	149.00	154.00	5.00	0.57
and	166.60	175.00	8.40	1.46
VVGD-556	24.10	27.40	3.30	0.93
and	36.00	39.00	3.00	0.87
and	103.75	107.70	3.95	0.71
VVGD-561	0.00	3.50	3.50	1.07
and	14.60	29.00	14.40	0.54
and	127.40	131.00	3.60	0.58
and	174.40	184.70	10.30	3.25
and	198.60	203.20	4.60	4.05
and	229.60	231.75	2.15	8.74
and	259.00	281.00	22.00	0.89
and	350.00	358.00	8.00	0.58
and	367.00	370.60	3.60	1.57
and	412.40	418.50	6.10	0.86
and	463.00	469.00	6.00	1.97
and	480.00	485.00	5.00	0.72
and	534.40	538.00	3.60	1.01
and	559.00	566.60	7.60	0.85
and	587.00	590.00	3.00	0.58
and	615.00	618.20	3.20	1.86
VVGD-563	0.00	5.00	5.00	0.66
and	175.00	179.70	4.70	1.82
and	247.00	250.00	3.00	0.56
VVGD-569	26.00	28.00	2.00	1.86
VVGD-570	100.20	104.62	4.42	1.47
VVGD-577	56.21	58.70	2.49	5.97



NR 11/07/2012									
Ouro Verde Deposit					Ouro Verde Deposit				
Hole #	From (m)	To (m)	Width (m)	Au g/t	Hole #	From (m)	To (m)	Width (m)	Au g/t
VVGD-404	98.00	101.00	3.00	1.80	VVGD-474	175.00	183.00	8.00	0.50
and	195.17	201.00	5.83	0.55	and	188.90	207.15	18.25	1.49
and	236.00	242.00	6.00	1.84	and	287.00	330.00	43.00	1.45
and	264.00	268.00	4.00	0.55	and	360.00	379.30	19.30	1.30
and	273.70	283.00	9.30	1.03	and	453.30	462.00	8.70	5.36
and	288.00	300.00	12.00	1.70	and	492.00	495.20	3.20	0.61
and	328.00	333.00	5.00	0.63	VVGD-482	113.00	119.51	6.51	0.82
and	371.00	374.00	3.00	18.97	and	141.00	151.00	10.00	1.12
and	381.00	390.00	9.00	1.52	and	155.00	158.15	3.15	1.69
and	485.00	489.00	4.00	3.00	and	174.00	177.70	3.70	0.50
VVGD-407	148.00	153.00	5.00	0.73	and	234.84	237.10	2.26	3.35
and	174.00	181.89	7.89	0.66	VVGD-488	230.00	237.00	7.00	0.66
and	185.00	193.00	8.00	1.22	and	263.10	275.66	12.56	3.90
and	234.60	240.00	5.40	1.31	and	285.00	293.00	8.00	0.56
and	254.25	263.00	8.75	0.94	and	301.50	310.00	8.50	1.51
and	271.00	280.40	9.40	0.74	and	314.00	317.00	3.00	0.96
and	293.60	299.00	5.40	0.71	and	333.00	336.60	3.60	2.31
and	373.00	381.00	8.00	2.54	and	342.40	357.00	14.60	1.67
and	418.00	421.00	3.00	1.11	and	399.00	407.00	8.00	0.75
VVGD-436	NSR				and	448.00	451.70	3.70	0.64
VVGD-438	0.00	6.60	6.60	2.36	and	457.50	459.60	2.10	19.35
and	112.60	116.08	3.48	0.92	and	463.80	467.00	3.20	1.92
and	125.97	137.07	11.10	1.63	and	472.00	480.00	8.00	2.30
and	148.90	153.90	5.00	0.70	and	493.00	502.00	9.00	1.44
and	166.50	178.00	11.50	2.43	and	514.00	517.96	3.96	5.45
VVGD-444	80.00	85.00	5.00	9.20	VVGD-498	89.00	98.00	9.00	1.94
and	124.00	131.45	7.45	1.74	and	177.00	186.00	9.00	1.65
and	135.40	141.12	5.72	7.54	and	200.00	209.50	9.50	0.66
and	235.48	247.38	11.90	0.92	and	222.40	225.00	2.60	8.09
and	255.46	266.00	10.54	0.98	and	238.00	242.00	4.00	0.52
and	297.25	306.20	8.95	0.94	and	259.00	282.20	23.20	1.27
and	338.00	342.45	4.45	1.12	and	290.70	294.80	4.10	0.81
and	353.95	361.25	7.30	0.63	and	303.00	313.00	10.00	0.65
and	374.25	381.40	7.15	0.97	and	320.92	325.00	4.08	0.53
and	401.85	413.95	12.10	4.90	and	349.00	356.00	7.00	0.73
and	425.34	459.25	33.91	1.13	and	363.00	372.00	9.00	2.20
including	435.85	442.22	6.37	2.94	and	388.00	394.40	6.40	1.35
and	463.00	468.50	5.50	2.01	and	434.00	445.37	11.37	3.02
and	483.50	500.23	16.73	2.00					
VVGD-470	23.85	29.00	5.15	1.44					
and	33.50	38.20	4.70	1.08					



Ouro Verde Deposit				
Hole #	From (m)	To (m)	Width (m)	Au g/t
VVGD-504	358.60	364.05	5.45	3.21
and	405.00	426.75	21.75	2.93
including	417.60	426.75	9.15	5.89
and	447.32	459.75	12.43	1.13
and	480.00	491.00	11.00	0.89
and	496.00	500.00	4.00	0.60
and	574.55	583.70	9.15	1.23
VVGD-506	80.25	83.05	2.80	1.71
and	149.00	151.00	2.00	2.01
and	208.00	217.00	9.00	2.06
and	223.20	229.13	5.93	0.78
and	250.10	265.49	15.39	1.86
including	250.10	256.85	6.75	2.78
and	272.00	281.35	9.35	1.00
VVGD-515	15.00	18.00	3.00	1.56
and	104.00	107.00	3.00	0.98
and	135.00	139.00	4.00	0.75
and	147.00	152.00	5.00	0.98
and	159.00	174.00	15.00	0.53
and	179.80	198.70	18.90	0.86
VVGD-516	369.00	374.00	5.00	1.11
and	379.00	383.00	4.00	0.78
and	397.00	401.00	4.00	0.68
and	414.00	424.00	10.00	1.19
and	460.00	471.00	11.00	1.12
and	486.00	491.00	5.00	0.60
VVGD-519	138.00	141.00	3.00	0.96
and	233.00	239.50	6.50	2.48
and	261.70	273.40	11.70	2.52
and	283.00	288.56	5.56	0.87
and	303.60	307.00	3.40	1.10
and	315.00	321.00	6.00	2.30
and	325.00	328.45	3.45	1.51
and	333.20	337.40	4.20	1.56
VVGD-527	167.00	180.00	13.00	1.16
and	186.20	198.00	11.80	0.73
and	230.00	238.00	8.00	2.09
and	259.00	270.00	11.00	1.30
and	275.00	279.00	4.00	1.53
and	288.00	291.20	3.20	0.60
and	295.00	299.00	4.00	0.55

Ouro Verde Deposit				
Hole #	From (m)	To (m)	Width (m)	Au g/t
VVGD-532	249.00	255.00	6.00	0.74
and	287.30	298.50	11.20	2.44
and	302.00	317.00	15.00	1.40
and	321.80	325.00	3.20	0.68
and	352.00	356.30	4.30	1.01
and	379.00	384.00	5.00	0.57
and	388.00	394.00	6.00	1.17
and	403.00	410.00	7.00	1.57
and	432.00	444.00	12.00	0.98
VVGD-540	0.00	5.50	5.50	0.96
and	123.92	133.20	9.28	2.05
VVGD-549	123.00	139.00	16.00	0.62
and	187.00	190.00	3.00	1.07
VVGD-554	280.00	284.20	4.20	0.86
and	346.00	364.50	18.50	1.01
and	375.75	385.00	9.25	3.81
and	405.35	409.00	3.65	0.59
and	412.50	420.00	7.50	1.60
VVGD-558	NSR			
VVGD-559	7.00	14.90	7.90	0.64
and	36.00	44.00	8.00	0.88
and	151.00	154.00	3.00	0.56
and	156.00	159.00	3.00	0.57
and	188.00	220.00	32.00	1.20
and	231.10	238.00	6.90	1.59
and	247.00	253.00	6.00	0.81
and	313.00	316.00	3.00	0.55
and	323.60	328.00	4.40	0.85
VVGD-565	207.00	209.32	2.32	1.83
VVGD-566	22.00	30.00	8.00	1.15
and	35.45	48.75	13.30	0.61
and	53.00	55.25	2.25	4.75
and	103.55	109.17	5.62	1.40
and	265.70	270.00	4.30	1.42

South Block Target				
Hole #	From (m)	To (m)	Width (m)	Au g/t
VVGD-422	82.00	92.00	10.00	1.04
and	150.90	157.00	6.10	3.47
VVGD-465	117.70	123.30	5.60	1.76
and	218.00	222.65	4.65	6.13



Quality Assurance and Quality Control

The scientific and technical information in this press release has been reviewed and approved by David Gower, P. Geo., an advisor to Belo Sun and a Qualified Person as defined by National Instrument 43-101. The exploration program is directly supervised by Mr. Carlos Cravo, P. Geo., Belo Sun's exploration manager. Belo Sun's procedures for handling drill core comprise initial description and logging into a Microsoft Access database. Mineralized, suspected mineralized or not intervals in the drill holes are described in detail and marked for sampling. Core is then cut in half with the right-hand portion of the core put into plastic sample bags and sealed. The left-hand portion is returned to the core box and is stored for future reference or study. Assay standard and "Blank" samples are inserted every 20th sample. These samples are then delivered to ACME Labs sample preparation facility at the Project site. The assay samples are then fine-crushed to better than 80% passing 10 mesh screens, with an assay pulp split of up to 1,000 grams pulverized to better than 85% passing 200 mesh screen. Samples are assayed at ACME Labs in Santiago, Chile, using a 50 gram fire assay with AAS finish. These QA/QC procedures provide several measures of data quality and assure the company that the assay data is representative of the original sample.

About the Company

Belo Sun Mining Corp. is a Canadian-based mineral exploration company with a portfolio of properties focused on gold in Brazil. Belo Sun's primary focus is on advancing and expanding its 100% owned Volta Grande Gold Project, located in Para State. Belo Sun trades on the TSX under the symbol "BSX". For more information about Belo Sun please visit www.belosun.com.

Cautionary Statement on Forward Looking Information

This press release contains "forward-looking information" within the meaning of applicable Canadian securities legislation. Forward-looking information includes, without limitation, statements regarding the impact of drill results on the Company and its understanding of the project; statements with respect to the development potential and timetable of the project; the estimation of mineral resources; realization of mineral resource estimates; the timing and amount of estimated future exploration; costs of future activities; capital and operating expenditures; success of exploration activities; currency exchange rates; government regulation of mining operations; and environmental risks. Generally, forward-looking information can be identified by the use of forward-looking terminology such as "plans", "expects" or "does not expect", "is expected", "budget", "scheduled", "estimates", "forecasts", "intends", "anticipates" or "does not anticipate", or "believes", or variations of such words and phrases or state that certain actions, events or results "may", "could", "would", "might" or "will be taken", "occur" or "be achieved". Forward-looking information is subject to known and unknown risks, uncertainties and other factors that may cause the actual results, level of activity, performance or achievements of the Company to be materially different from those expressed or implied by such forward-looking information, including risks inherent in the mining industry and risks described in the public disclosure of the Company which is available under the profile of the Company on SEDAR at www.sedar.com and on the Company's website at www.belosun.com. Although the Company has attempted to identify important factors that could cause actual results to differ materially from those contained in forward-looking information, there may be other factors that cause results not to be as anticipated, estimated or intended. There can be no assurance that such information will prove to be accurate, as actual results and future events could differ materially from those anticipated in such statements. Accordingly, readers should not place undue reliance on forward-looking information. The Company does not undertake to update any forward-looking information, except in accordance with applicable securities laws.

For further information, please contact:

Mark Eaton, President and CEO
Belo Sun Mining Corp. Tel:(416) 309-2137



Figure 1 – Ouro Verde – Grota Seca Geological Map

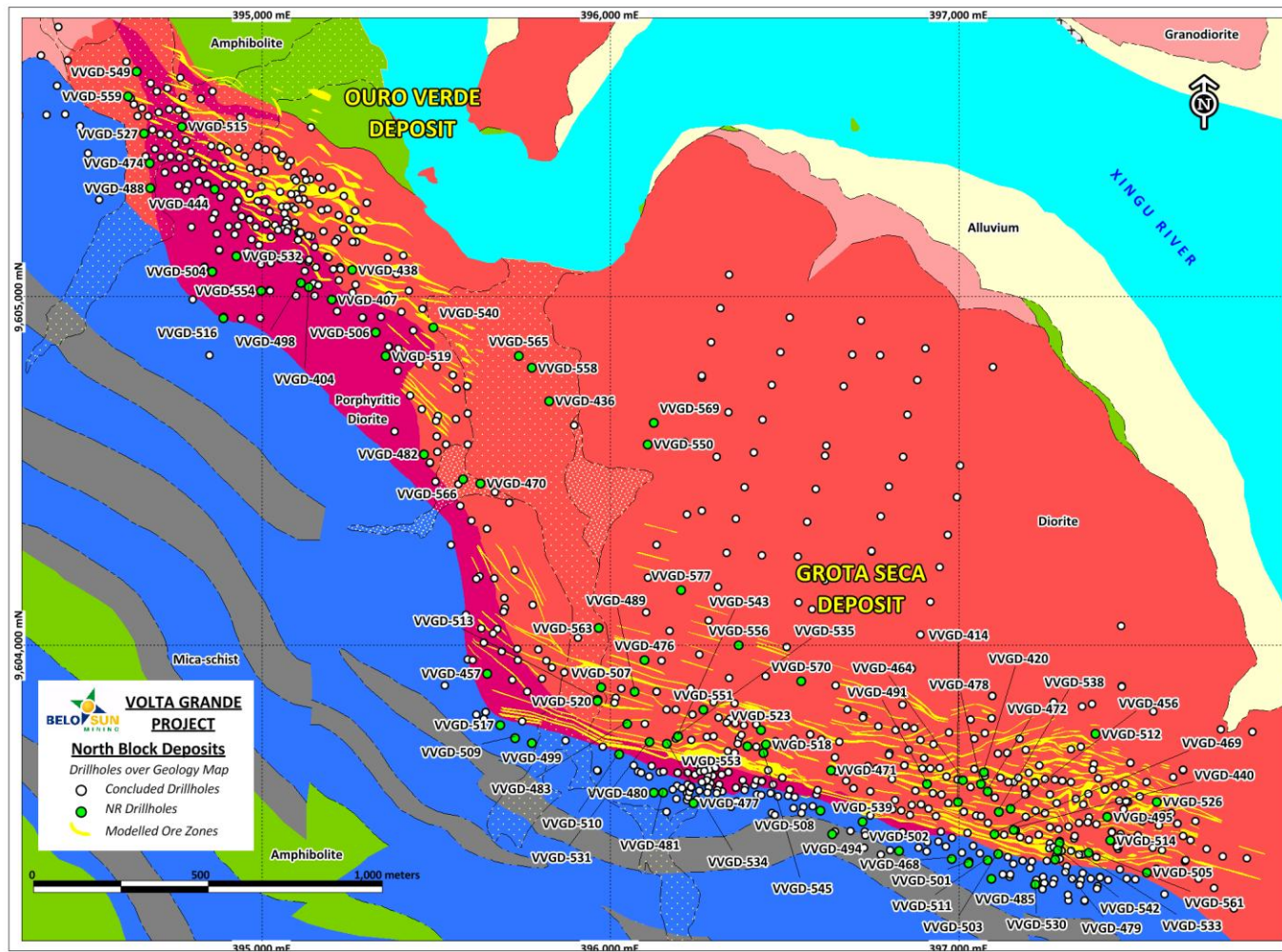
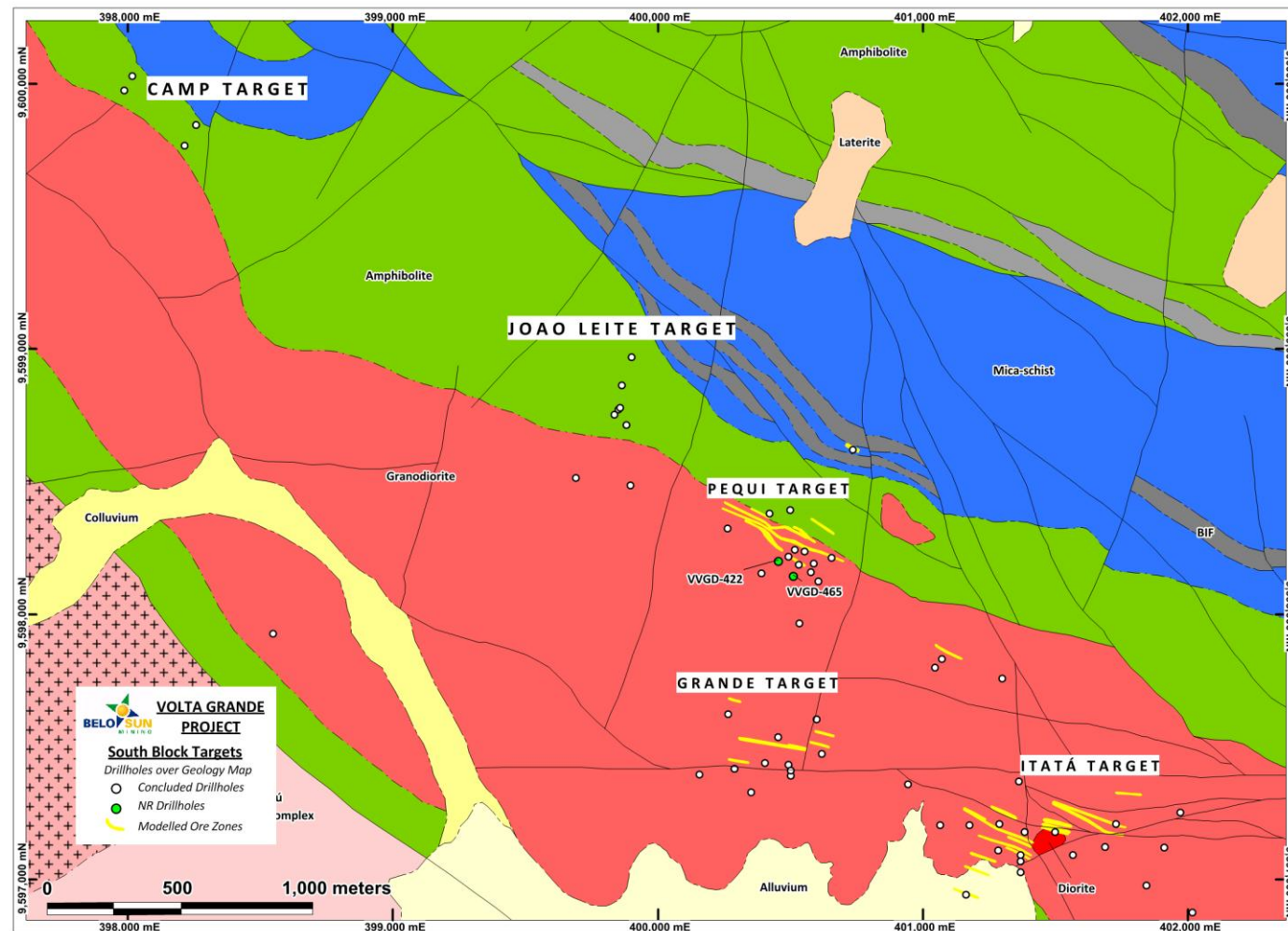




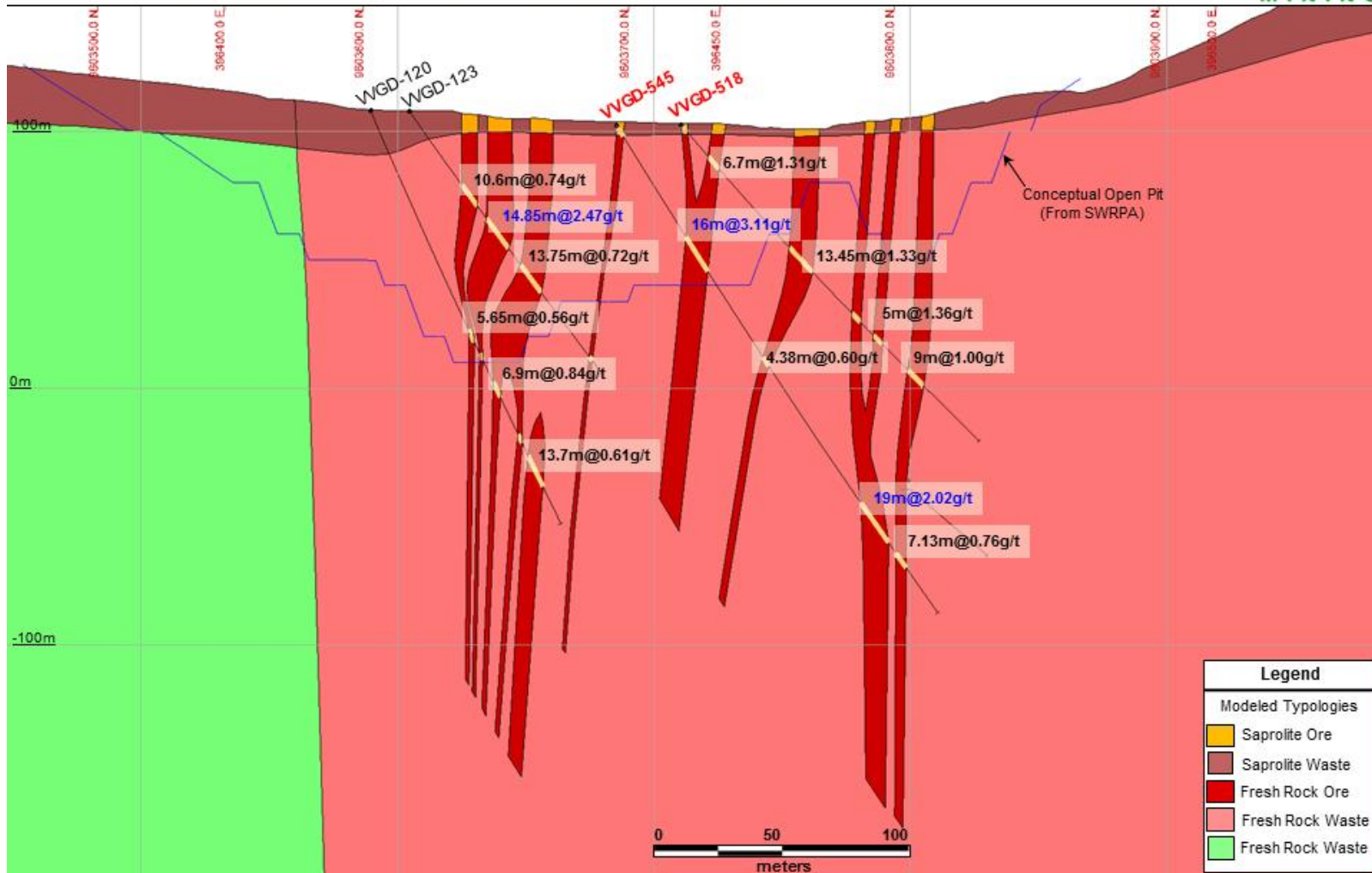
Figure 2 – South Block Geological Map





Volta Grande Gold Project

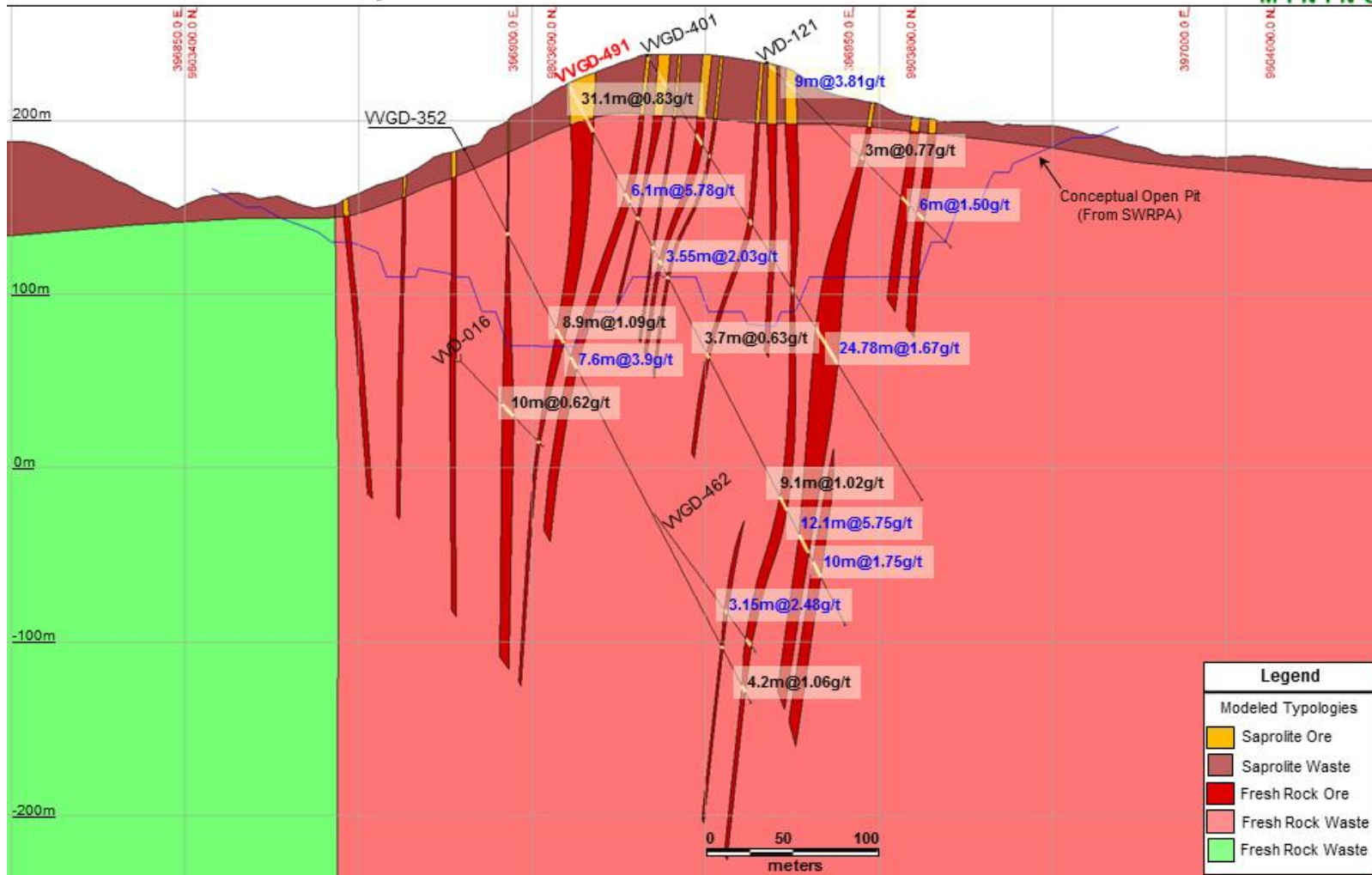
Grota Seca Deposit - Cross Section 1750 W





Volta Grande Gold Project

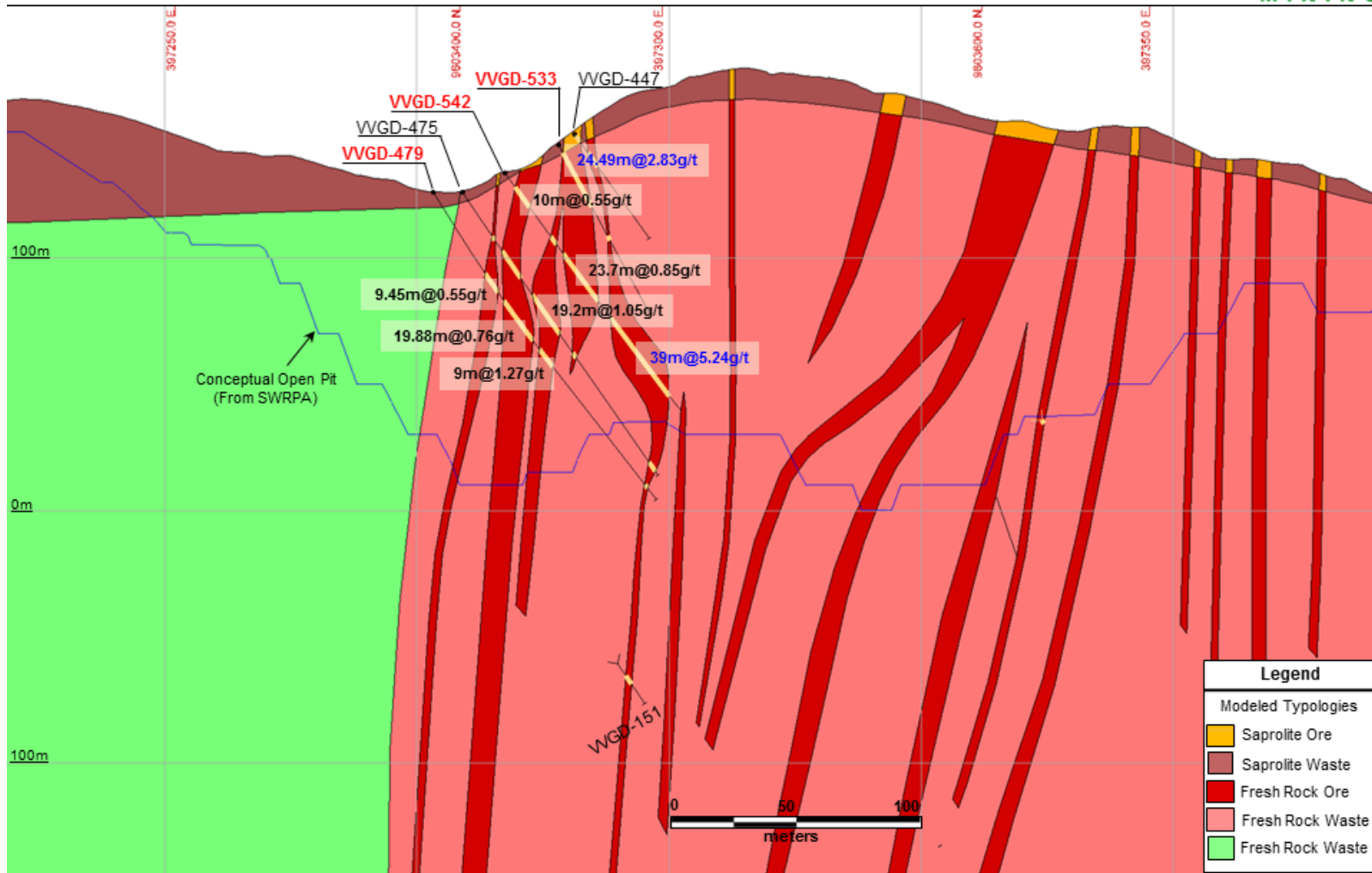
Grota Seca Deposit - Cross Section 1275 W





Volta Grande Gold Project

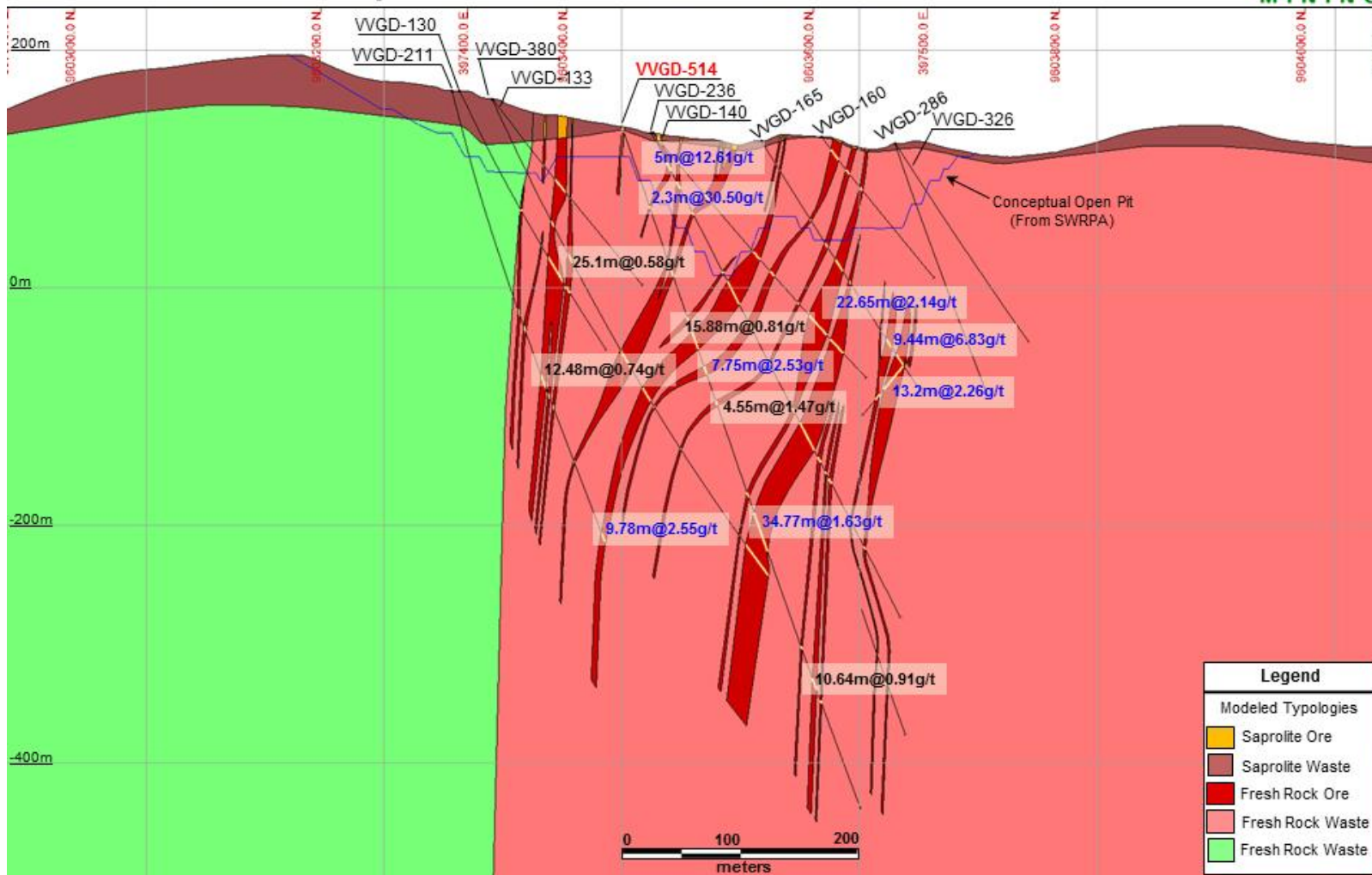
Grota Seca Deposit - Cross Section 862.5 W





Volta Grande Gold Project

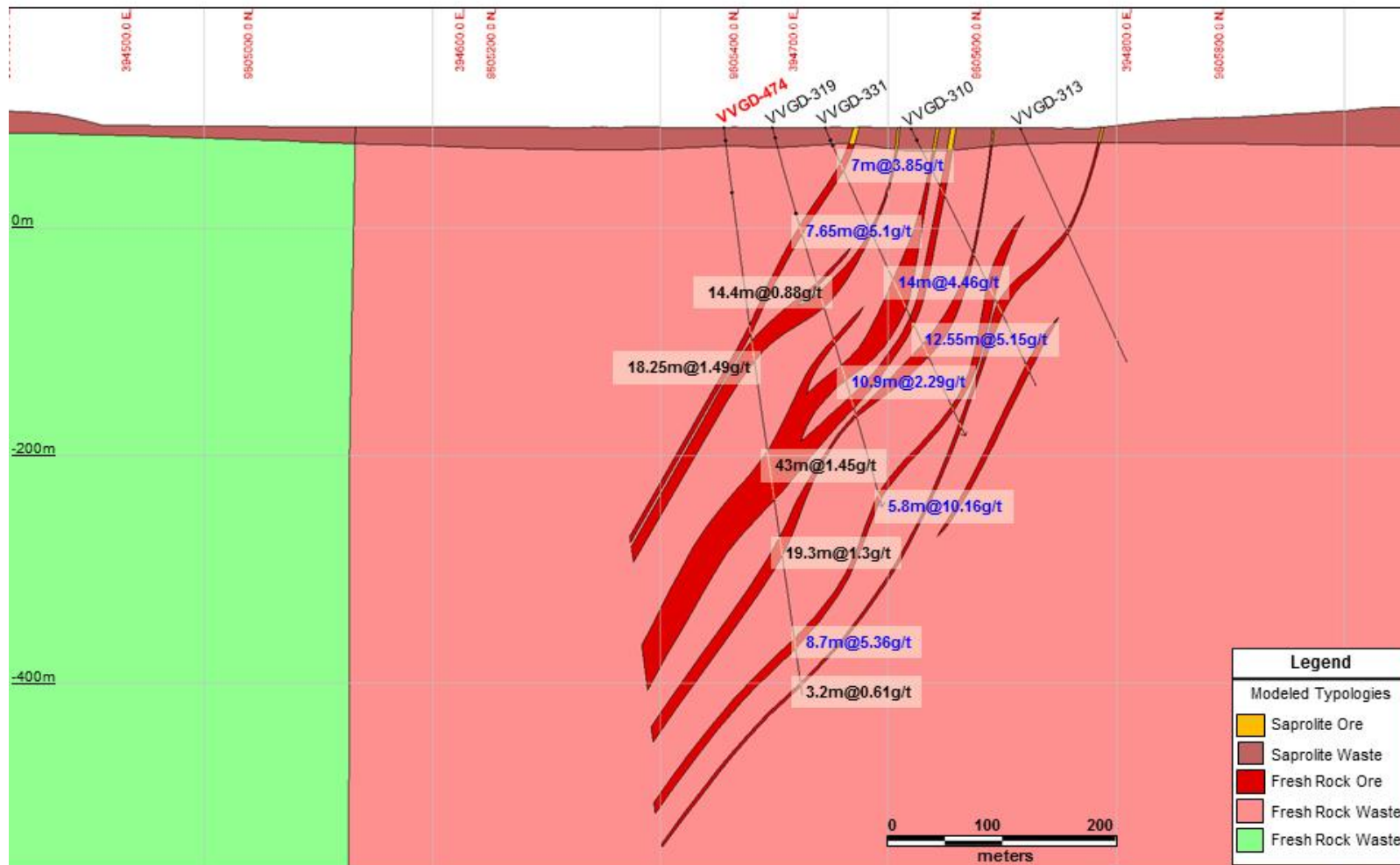
Grota Seca Deposit - Cross Section 725 W





Volta Grande Gold Project

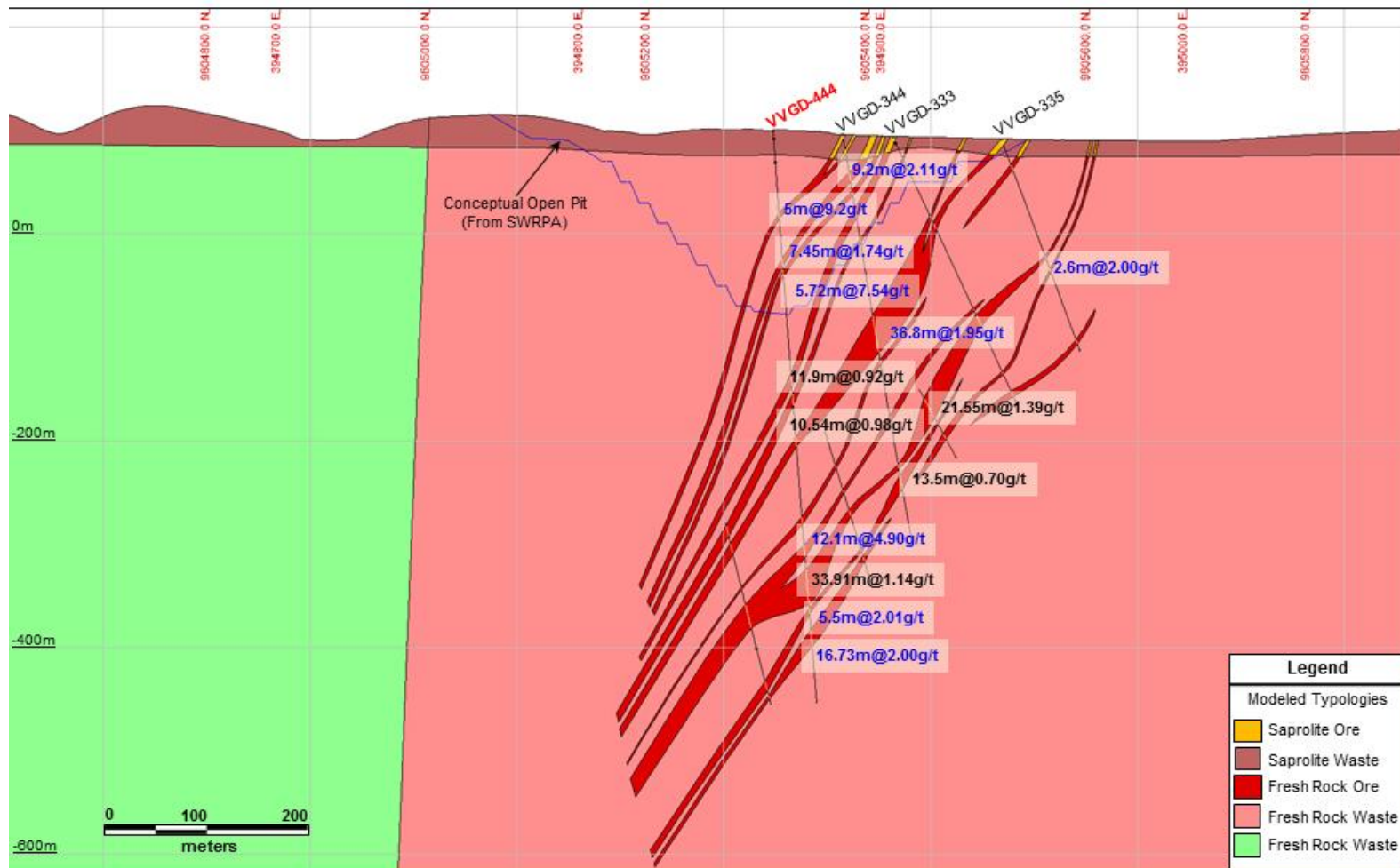
Ouro Verde Deposit - Cross Section 925 NW





Volta Grande Gold Project

Ouro Verde Deposit - Cross Section 725 NW





Volta Grande Gold Project

Ouro Verde Deposit - Cross Section 350 J





Volta Grande Gold Project South Block Target - Cross Section 3300 S

